

TAMIAMI TRAIL EAST

SCREENINGS:

- CONSIDER LOOSE BUFFER AGAINST TENNIS FENCE TO SCREEN VIEWS
- SAW PALMETTO
- PANAMA ROSE
- OLEANDER
- COCOPLUM

ENTRY SIGN:

- RAISE EXISTING SIGN WITHIN SUPPORTS TO INCREASE VISIBILITY

NEWPORT DRIVE

MEDIAN:

- CONSIDER REMOVING PLANTINGS TO CONTINUE SOD THROUGHOUT.
- OPTION: LOW GROUNDCOVER

SIGN PLANTINGS:

- REPLACE WITH MASSES GRASSES AND GROUNDCOVERS WITH SMALL PALM ACCENTS TO SIMPLIFY APPEARANCE AND MAINTENANCE
- OPTION: RETAIN EXISTING SHRUBS

WING WALLS:

- CLEAN UP APPEARANCE BY REMOVING PLANTINGS
- REPLACE WITH BOLD MASSES NATIVE GRASSES
- CONSIDER REMOVING QUEEN PALMS, EAST
- CONSIDER CLUSTERED PALMS BEHIND WEST WALL

STREETSCAPE:

- UNDERPLANT PALMS WITH NATIVE GRASSES
- SAW PALMETTO
- OLEANDER

OVERHEAD POWER LINES

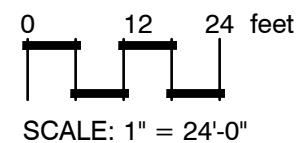
PORT OF THE ISLANDS
MAIN ENTRY CONCEPT PLAN

25000 TAMIAMI TRAIL EAST

L-1
SHEET 1 OF 4

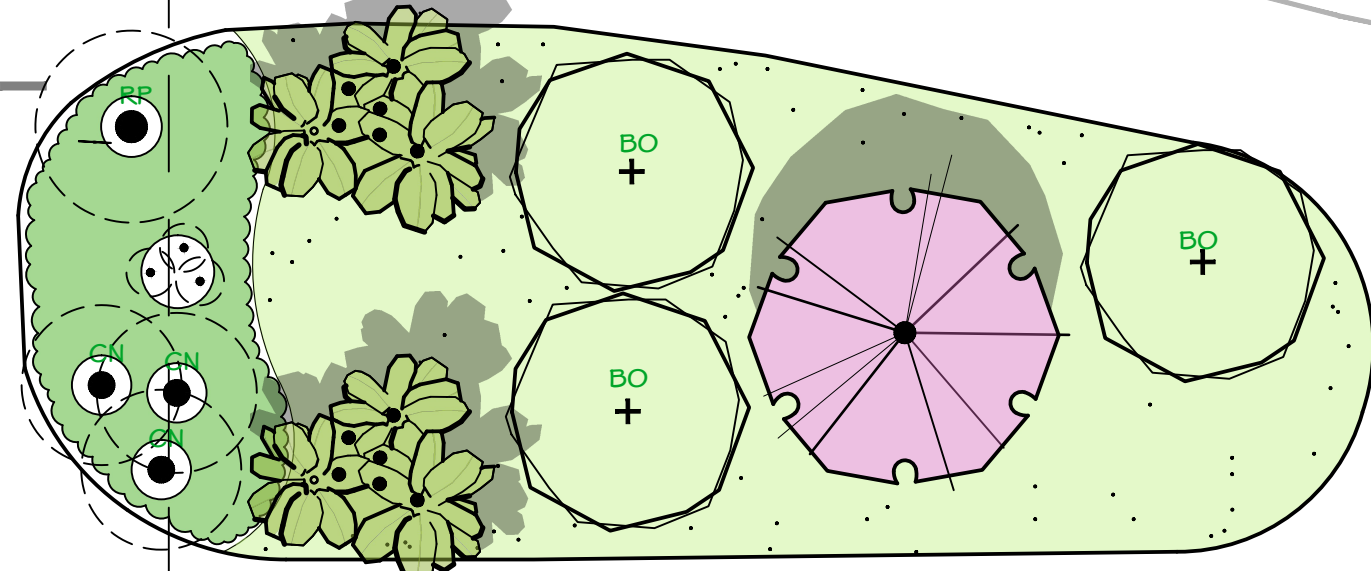
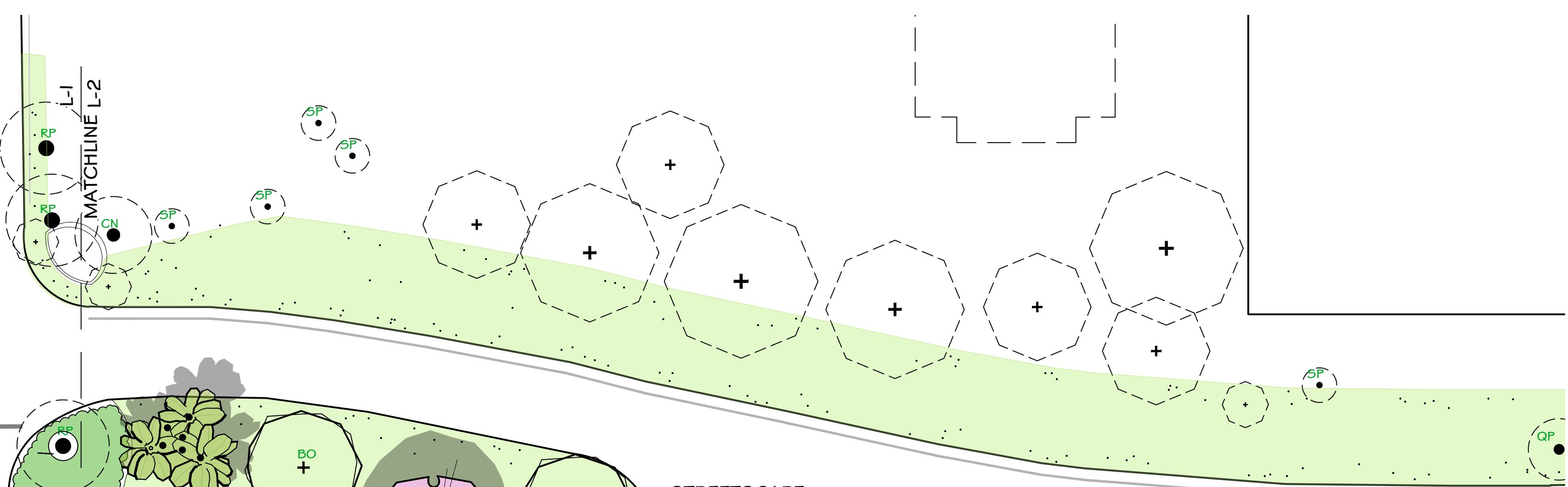


NORTH



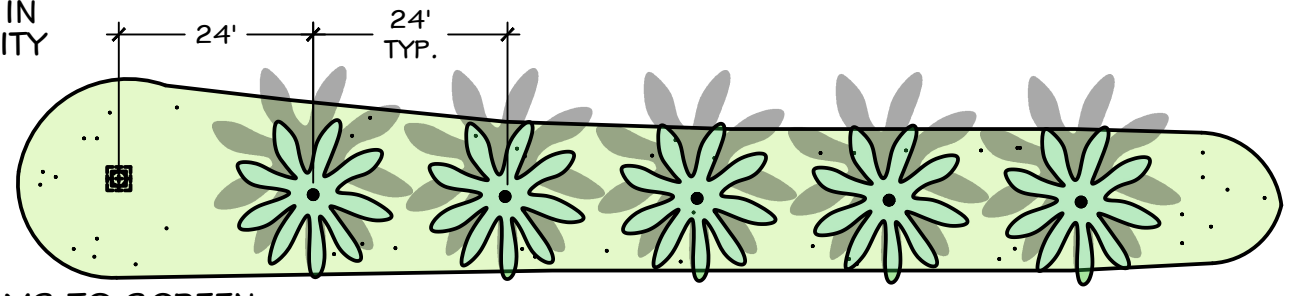
PRINTS FULL SCALE
AT 11" X 17" SIZE

GOETZ+STROPES
LANDSCAPE ARCHITECTS INC.
AUGUST 16, 2024

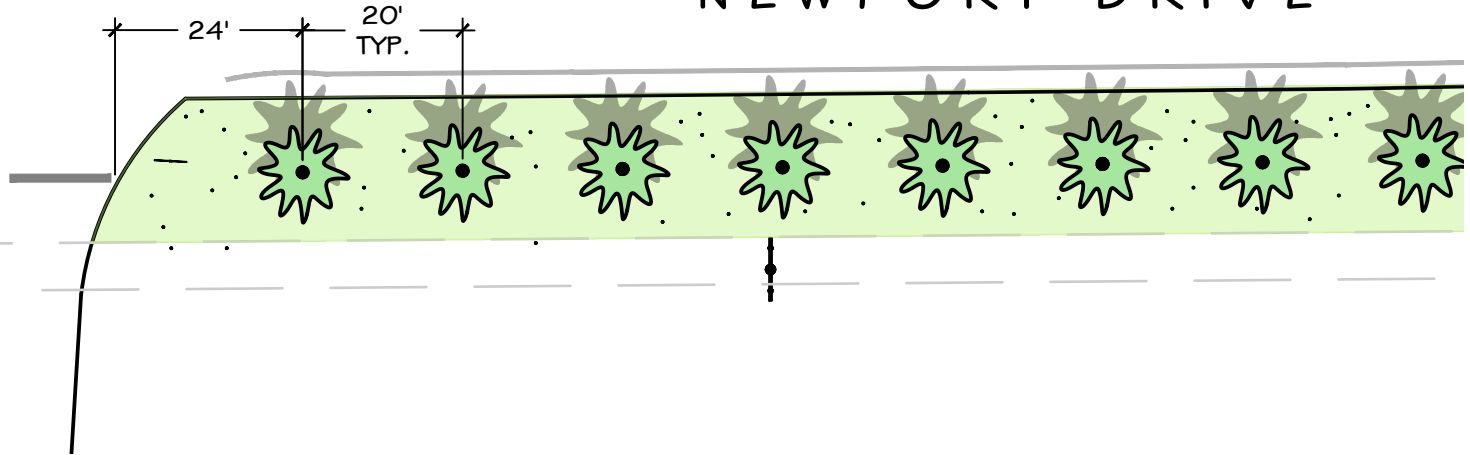


STREETSCAPE: REINFORCE TROPICAL CHARACTER

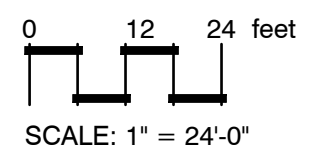
- CONSIDER LARGE SCALE PALMS IN MEDIANS TO IDENTIFY COMMUNITY
 - COCONUT
 - RECLINATA
- CANOPY TREES AS ACCENT
 - GUMBO LIMBO
 - ROYAL POINCIANA
- LINE WEST SIDE WITH SABAL PALMS TO SCREEN POWERLINE AND DEFINE ROADWAY



NEWPORT DRIVE



NORTH



ROADSIDES:

- CONSIDER ADDING NATIVE SABAL PALMS TO DEFINE COMMUNITY ENTRANCE
- EXISTING TURF TO REMAIN
- RETAIN EXISTING TREES AND PALMS

20' TYP.

CAYS DRIVE

- BEDS OF BROMELIADS WITH TROPICAL COLOR FLANK LANES
- LIRIOPE GROUNDCOVER

OLE

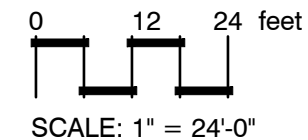
- GROUNDCOVER PLANTINGS MAINTAIN VISIBILITY FOR SAFETY
- REMOVE UNHEALTHY PYGMY DATE PALMS

ENTRY MEDIAN:

- IMPROVE LEGIBILITY OF EXISTING SIGN WITH FRESH COAT OF PAINT
- SIMPLIFY PLANTINGS IN ISLAND WITH LOW SIMPLE GROUNDCOVER
- CONSIDER SHADE TOLERANT BEDS FLANKING ENTRY WALLS UNDER CANOPY TREES OF GROUNDCOVER / NATIVE GRASSES
- UPLIGHT CANOPY TREES TO SHOWCASE FROM ROADWAY

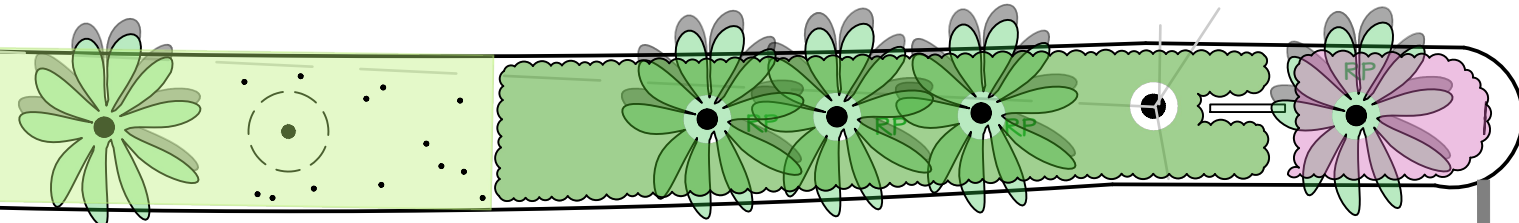
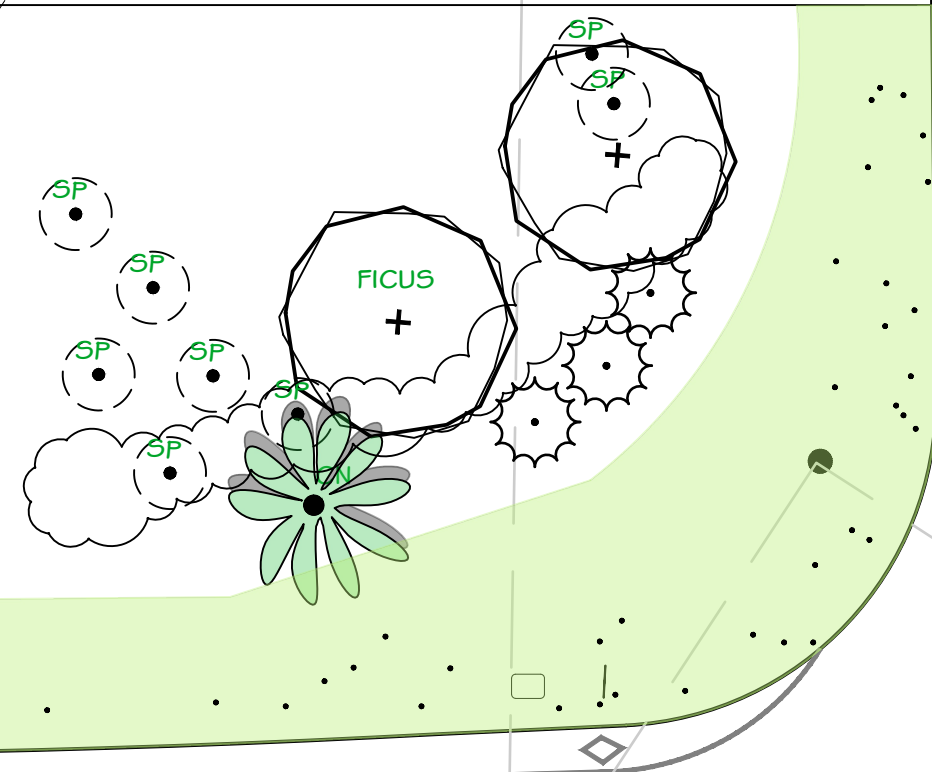


NORTH



ISLAND:

- CONTINUE GOOD USE OF NATIVE GRASSES : MUHLY, DWARF FAKAHATCHEE
- FILL IN FROM EDGE TO EDGE FOR FULL APPEARANCE BELOW PALMS
- CONSIDER SEASONAL COLOR WITH IMPROVED SOILS IN TIP OR A SIMPLE EVERGREEN LIRIOPE
- PAINT UTILITY BLACK
- REMOVE ARBORICOLA, IXORA
- ALLOW PODOCARPUS TO GROW IN FULL



UNION DRIVE

SIDES: SIMPLIFY

- EXCELLENT COCOPLUM HEDGE ALONG FENCING TO REMAIN
- REMOVE DISEASED PYGMY DATE PALMS
- CONSIDER OLEANDER / SILVER BUTTWOOD / SILVER SAW PALMETTO FOR LARGE ACCENTS FLANKING SIGN
- USE ONE GOOD LOW GROUNDCOVER ACROSS FACE OF SIGN WALL:
 - DWARF CARISSA
 - LIRIOPE



TAMIAMI TRAIL EAST

